

Reference Sire **B3R Back to Basics U077**

Bull 09/25/08 reg 16317735 # tattoo U077

B3R 0004 ELECTRA 8082-8017
B3R TENDER TEN R065#
 B3R N127 5522 BLACKBIRD 203

B3R 8082 3173 ELECTOR 4013
 B3R 8017 466 LADY 7164#
 FINKS 5522-6148#
 B3R BLACKBIRD 2075 P
 B3R M048 CAFD 0125#
 B3R M098 3525 ERICA 9164#
 B3R 0128 RITO 3091 4004
 B3R 9032 7095 ELISE 7637#

B3R P061 M048 CAFD M098
B3R S024 ELISE P061 N191
 B3R N191 0128 ELISE 9032#

BW	WW	YW	Milk	Marb	RE
-4.0	+35	+60	+26	+0.71	-0.10

AAR Scores

Feet	4.5
Muscle	2.5
Disp	4
Fert	
Mother	
W Wt	4
Frame	4.5
Flesh	3
CE	4
D Milk	
Udder	
Vigor	5



B3R Back to Basics U077

Reference Sire **Musgrave Aviator**

Bull 01/30/12 reg 17264774 tattoo MA

SITZ UPWARD 307R#
KOUPALS B&B IDENTITY#
 B&B ERICA 605#

CONNELLY ONWARD#
 SITZ HENRIETTA PRIDE 81M
 G A R EXALTATION 3144#
 B&B ERICA 4064

S A V FINAL ANSWER 0035#
MCATL FOREVER LADY 1429-138
 ALC FOREVER LADY R02S

SITZ TRAVELER 8180#
 S A V EMULOUS 8145
 LEACHMAN RIGHT TIME#
 ALC FOREVER LADY K14P

BW	WW	YW	Milk	Marb	RE
-1.8	+50	+91	+25	+0.55	+0.68

AAR Scores

Feet	2
Muscle	3
Disp	3
Fert	
Mother	
W Wt	3
Frame	3
Flesh	2.5
CE	3.5
D Milk	
Udder	
Vigor	3.5



Musgrave Aviator

Reference Sire **Spur Franchise of Garton**

Bull 08/28/12 reg 17420917 tattoo SPR

BASIN FRANCHISE P142#
SPUR FRANCHISE 7070
 H&H L&C LADY BEHAVE 5040#

C A FUTURE DIRECTION 5321#
 BASIN CHLOE 812L
 SPUR SUCCESS 2801
 SPUR LADY BEHAVE 3061

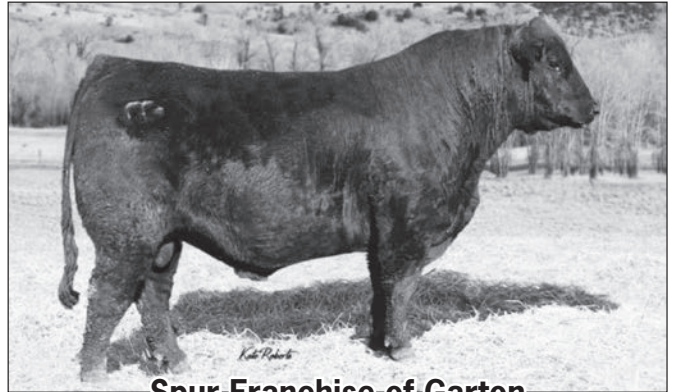
SYDGEN C C & 7#
H&H IRENE LASS 0135#
 H&H L&C IRENE LASS 7116

S A F CONNECTION#
 SYDGEN FOREVER LADY 4087
 SPUR SUCCESS 2801
 H&H L&C IRENE LASS 5099

BW	WW	YW	Milk	Marb	RE
-0.3	+48	+94	+26	+1.09	+1.10

AAR Scores

Feet	2.5
Muscle	2.5
Disp	4
Fert	3
Mother	3
W Wt	4
Frame	4
Flesh	2.5
CE	2
D Milk	4
Udder	2.5
Vigor	3



Spur Franchise of Garton

Reference Sire **Cole Creek Black Bore 572**

Bull 02/19/12 reg 17329105 tattoo B572

COLE CREEK BLACK CEDAR 46P#
COLE CREEK FULL BORE 730
 COLE CREEK S G JUMBOLEEN 76P#

C H QUANTUM 6247#
 COLE CREEK CLOVA JUANADA 67
 HBR ENCORE 0544
 COLE CREEK JUMBOLEEN 876
 JUANADA GOLDMERE OF P J M
 COLE CREEK CLOVADA 397
 C H QUANTUM 6247#
 COLE CREEK JUANADA 429

COLE CREEK GOLDMERE 31N#
COLE CREEK JUANADA 92T#
 COLE CREEK JUANADA 32P

BW	WW	YW	Milk	Marb	RE
+1.6	+47	+97	+28	+0.17	+0.50

AAR Scores

Feet	3.5
Muscle	3.5
Disp	2.5
Fert	3.5
Mother	
W Wt	3.5
Frame	3
Flesh	3.5
CE	2
D Milk	3
Udder	
Vigor	3.5

Reference Sire **Cole Creek Black Cedar 1100**

Bull 02/11/10 reg 16720395 tattoo 1100

C H QUANTUM 6247#
COLE CREEK BLACK CEDAR 46P#
 COLE CREEK CLOVA JUANADA 67

C H QUANTUM 3330#
 C H BLACKBIRD 0136
 A A R WINDY RIDGE 523#
 COLE CREEK CLOVA JUANADA 811
 HBR ENCORE 0544
COLE CREEK JUANADA BIRD 38N
 COLE CREEK JUANITA 311

BW	WW	YW	Milk	Marb	RE
+1.7	+34	+61	+29	+0.42	+0.24

AAR Scores

Feet	4
Muscle	3
Disp	4
Fert	3.5
Mother	
W Wt	3.5
Frame	4
Flesh	3.5
CE	3.5
D Milk	3
Udder	
Vigor	3.5

Reference
Sire

H A Image Maker 0415

Bull 01/23/00 reg +13739532 # tattoo 0415

R R HERO 6267#
HERO 6267 OF R R 2418#
R R EVERELDA ENTENSE 0413

H 96 RITO 2100 7371
H A RITO BLACKCAP 9038
H 96 BLACKCAP 3835

HIGHWOOD HERO L C H#
BLACKBIRD OF R R 1204#
Q A S TRAVELER 234#
RR EVERELDA ENTENSE 8320 TPB
RITO 2100 G D A R#
RITO EILEENMERE 378 OF 96
BAND 105 OF HYLINE 2380
H96 BLACKCAP EILEEN 380#

BW	WW	YW	Milk	Marb	RE
+0.2	+60	+98	+36	+0.05	+0.26

AAR Scores

Feet **4**
Muscle **2.5**
Disp **2.5**
Fert **3.5**
Mother **3.5**
W Wt **4**
Frame **3**
Flesh **2.5**
CE **3**
D Milk **4**
Udder **2.5**
Vigor **3.5**



H A Image Maker-0415

Reference
Sire

FairView Renegade 4166

Bull 07/05/14 reg +18164849 tattoo 4166

R R RITO 707#
RITO 707 OF IDEAL 3407 7075
IDEAL 3407 OF 1418 076

LEACHMAN RIGHT TIME#
FAIRVIEW LADY TRAVELER X85
B C C LADY TRAVELER 13B 93

RITO N BAR
ERISKAY OF ROLLIN ROCK 3
IDEAL 1418 OF 8103 4286
IDEAL 076 OF 692 8375
N BAR EMULATION EXT#
LEACHMAN ERICA 0025
D H D TRAVELER 6807#
CONCAR SARAH 8078

BW	WW	YW	Milk	Marb	RE
-1.6	+38	+63	+24	-0.11	+0.25

AAR Scores

Feet **4**
Muscle **4**
Disp **3**
Fert **3.5**
Mother **3**
W Wt **3**
Frame **3**
Flesh **4.5**
CE **3**
D Milk **3**
Udder **4**
Vigor **3.5**



FairView-Renegade-4166

Reference
Sire

DDA B&T 18K

Bull 05/01/10 reg 16878656 tattoo 18K

BANJO OF WYE UMF 6413
D D A BANJO 1101
MISS DIAMOND JUMBO 587

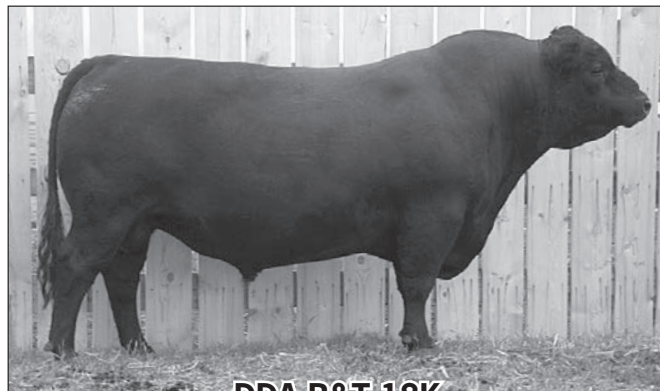
HIGH VALLEY 4C6 AMBUSH#
DDA GALATEA 031
D D A GALATEA 423

LONESTAR OF WYE
BLACKBIRD OF WYE UMF 5362#
BLACK BROWE JUMBO 37P
MISS DIAMOND CHANCE 334
PARAMONT AMBUSH 2172#
HIGH VALLEY GLORIA 1Q2
BANJO OF WYE UMF 6413
GALATEA DIAMOND 006

BW	WW	YW	Milk	Marb	RE
+1.3	+43	+70	+22	+0.34	+0.20

AAR Scores

Feet **4**
Muscle **4**
Disp **4**
Fert **3.5**
Mother **3**
W Wt **2.5**
Frame **2.5**
Flesh **4.5**
CE **3**
D Milk **3**
Udder **2.5**
Vigor **3.5**



DDA B&T-18K

